



Introduction

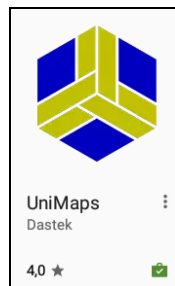
The UniMaps application for Android phones enables the user to change the active map the Unichip uses if the Unichip is fitted with the bluetooth module.

Installation

The android application can be downloaded from the Google Play App Store. Keywords that can be used to find the application are:

- Dastek
- Unichip
- UniMaps

The application is called UniMaps and is the one with the Dastek logo.



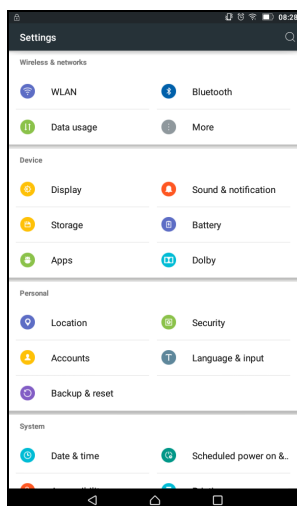
Once the application is located just click on the install button and wait for the download and install to finish.



Pairing The Bluetooth Module

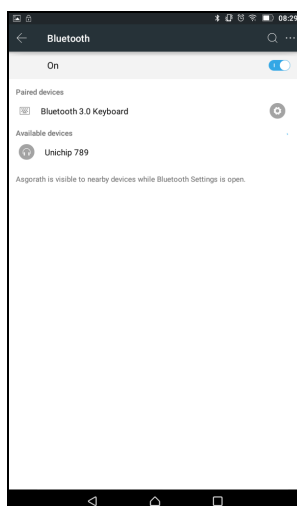
Before the app can be used, the Dastek Unichip Bluetooth Module needs to be paired with the phone in order for the application to recognize and use the module.

This can be done by going to the bluetooth settings on the user's phone.



Tap on the bluetooth icon to access the list of paired devices. If bluetooth is disabled enable it by tapping on the On switch.

Ensure that the Unichip Bluetooth Module is powered on by switching on the ignition. This will enable the phone to see the bluetooth module in order for pairing to take place.

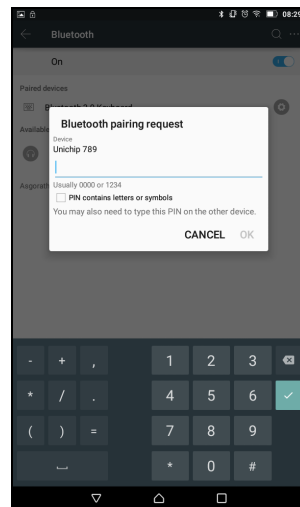




Pairing The Bluetooth Module (continued)

Tap on the bluetooth module's name in order to commence pairing. The user will be prompted with a dialogue to enter the pairing pin. This pin is printed on the module and is unique to each and every bluetooth module i.e. the pin provided on the bluetooth module will work only for your particular module.

Enter the pin and wait for pairing to complete



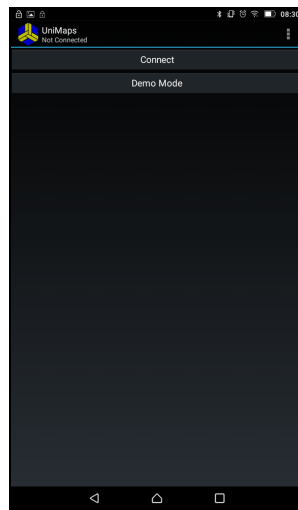
Once pairing is completed all the settings pages can be closed and the user can start the application downloaded from the Google Play Store.



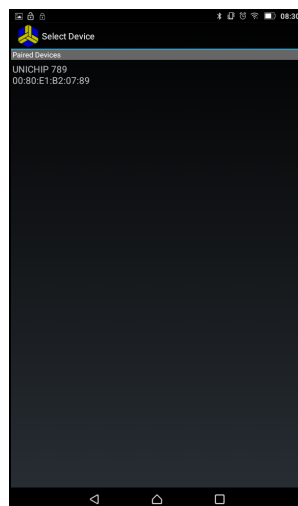
Running The Application

On the initial screen of the application the user is presented with two options. The first is to connect to a paired bluetooth module.

The second is a demonstration mode which will not interface with the bluetooth module at all and is merely included as a learning tool for the user to familiarize with the application with no real world implications.



Tapping on the connect button will present the user with a dialogue to choose between paired bluetooth modules. The application can be used with as many bluetooth modules as the user wants but the application only interfaces with one bluetooth module at a time.

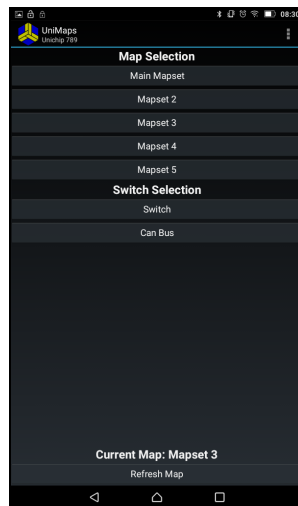




Running The Application (continued)

Tap on the desired bluetooth module to connect to it. Please note that the module needs to be in range and powered for a connection to be successful.

Once the connection is successful the user will be presented with a screen where the desired map can be chosen.



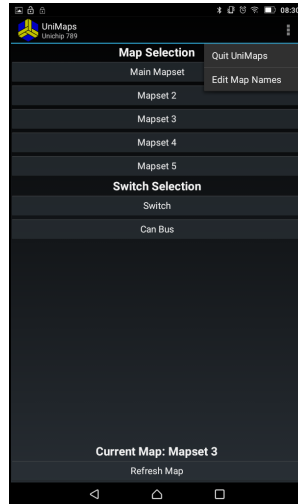
Initially all the descriptions will be as in the provided screenshot. To change the map simply tap on the desired button. The text at the bottom of the screen will display the current active map the Unichip is using.

Once satisfied with the map selection the user can return to the main screen by simply tapping the appropriate back button on the phone/tablet. This differs from device to device but is usually shown as a back button as in the above screenshot.

Alternatively the user can completely access other features of the application by using the appropriate menu button on the phone/tablet or by tapping the icon with the three dots in the top right hand corner of the application.



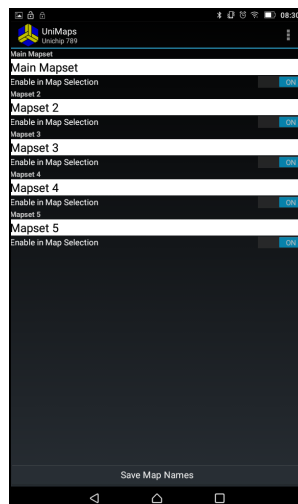
Running The Application (continued)



From here the user can completely quit the application or proceed to customize the buttons with different descriptions. The functionality to enable/disable certain buttons is also included.

Editing Map Names

Select the Edit Map Names option from the menu as illustrated in the previous screenshot.

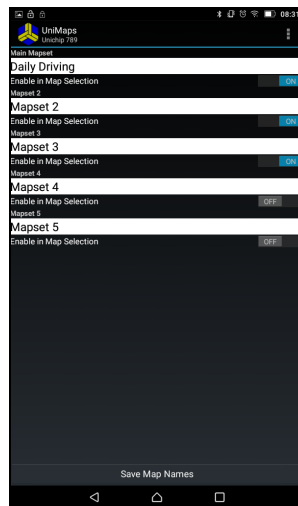




Editing Map Names (continued)

To change the map names, tap on the desired description and edit the text to fit the necessary requirements.

To enable/disable a button tap on the On/Off button located at the bottom of each description.



The map names will most likely be how the Unichip Installer mapped the buttons i.e. one map for daily driving, the other for an immobilizer mode etc.

After the user completed the changes, tap on the Save Map Names button at the bottom of the screen to save the changes. Alternatively the save option can be accessed via the menu button or by tapping on the icon with the three dots in the top right hand corner of the application.

To return to the map selection screen tap the back button or by accessing the menu.

The map selection will be updated as per the user's requirements to reflect the new names and will only display the enabled options.



Editing Map Names (continued)

